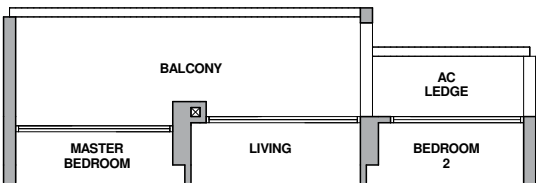
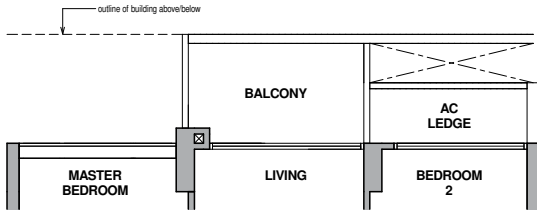


2-Bedroom

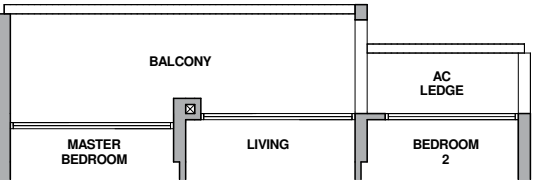
Type B-1a(h)



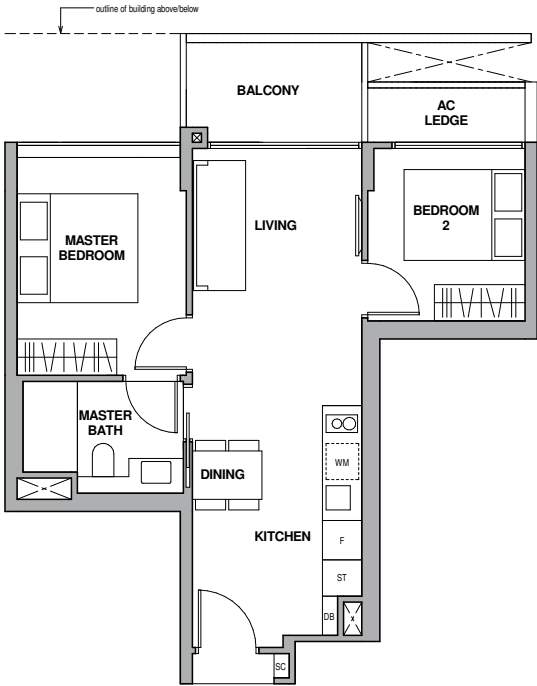
Type B-1a



Type B-1(h)



Type B-1



Fridge
Shoe Cabinet
Washer cum Dryer

F
SC
WM

Storage
Distribution Board

ST
DB

0135M

Type B-1a(h)

64 sq m / 689 sq ft
Inclusive of 11 sq m Balcony
& 3 sq m AC Ledge

Block 2B
#05-18

Block 6A
#05-46

Type B-1a

59 sq m / 635 sq ft
Inclusive of 6 sq m Balcony
& 3 sq m AC Ledge

Block 2B
#02-18 to #04-18

Block 6A
#02-46 to #04-46

Type B-1(h)

64 sq m / 689 sq ft
Inclusive of 11 sq m Balcony
& 3 sq m AC Ledge

Block 2
#05-04

Block 6
#05-39 *

Block 6B
#05-54

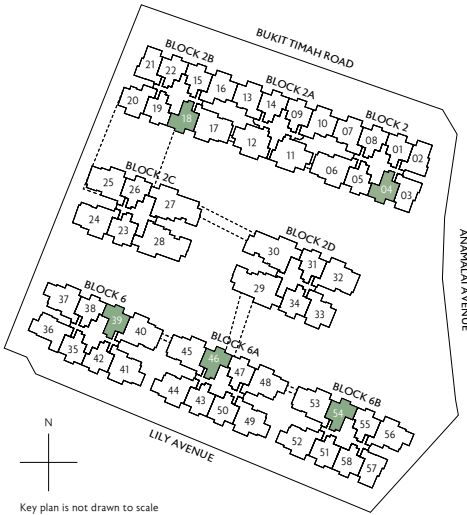
Type B-1

59 sq m / 635 sq ft
Inclusive of 6 sq m Balcony
& 3 sq m AC Ledge

Block 2
#02-04 to #04-04

Block 6
#02-39 to #04-39 *

Block 6B
#02-54 to #04-54

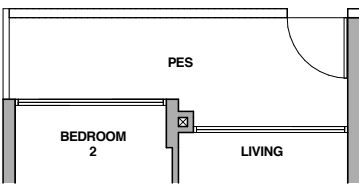


* Mirror Image

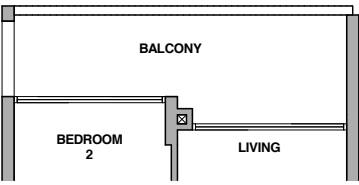
All plans are subject to change as may be required or approved by the relevant authorities. All floor areas are approximate measurements only and are subject to final survey. The balcony shall not be enclosed except with the approved balcony screen. For an illustration of the approved balcony screen, please refer to the diagram annexed hereto as "Annexure 1".

2-Bedroom

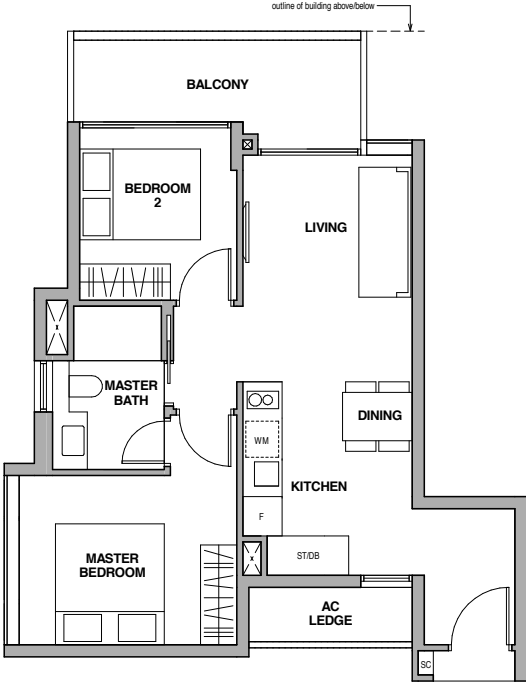
Type B-2(p)



Type B-2(h)



Type B-2



0135M

Fridge
Shoe Cabinet
Washer cum Dryer

F
SC
WM

Storage
Distribution Board

ST
DB

Type B-2(p)

67 sq m / 721 sq ft
Inclusive of 10 sq m PES
& 3 sq m AC Ledge

Block 2
#01-02 *

Block 2B
#01-21

Block 6B
#01-57

Type B-2(h)

67 sq m / 721 sq ft
Inclusive of 10 sq m Balcony
& 3 sq m AC Ledge

Block 2
#05-02 *

Block 2B
#05-21

Block 6B
#05-57

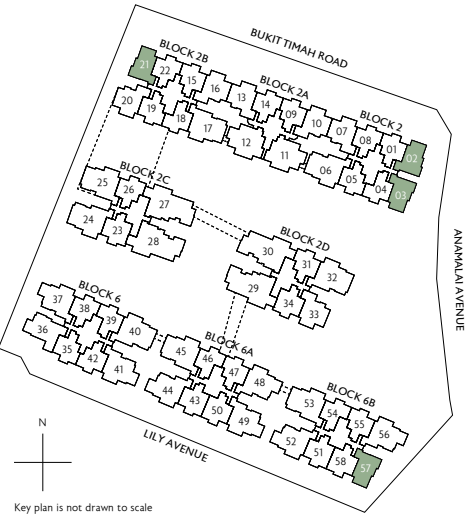
Type B-2

66 sq m / 710 sq ft
Inclusive of 9 sq m Balcony
& 3 sq m AC Ledge

Block 2
#02-02 to #04-02 *

Block 2B
#02-21 to #04-21

Block 6B
#02-57 to #04-57

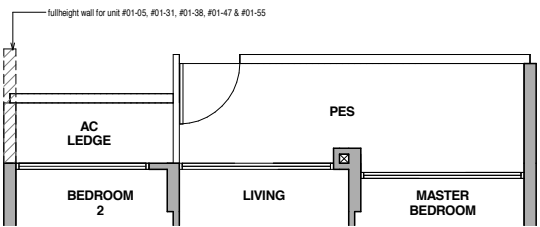


* Mirror Image

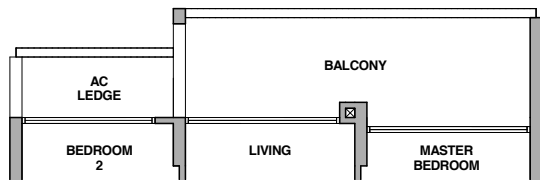
All plans are subject to change as may be required or approved by the relevant authorities. All floor areas are approximate measurements only and are subject to final survey. The balcony shall not be enclosed except with the approved balcony screen. For an illustration of the approved balcony screen, please refer to the diagram annexed hereto as "Annexure 1".

2-Bedroom Premium

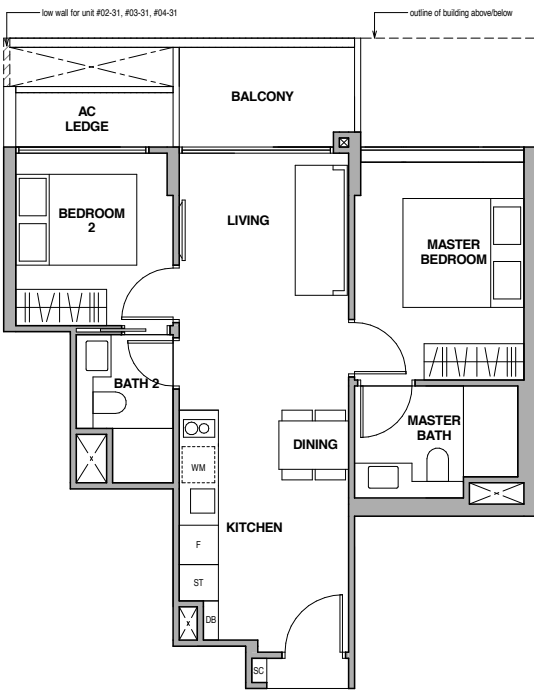
Type BP-1(p)



Type BP-1(h)



Type BP-1



Fridge
Shoe Cabinet
Washer cum Dryer

F
SC
WM

Storage
Distribution Board

ST
DB

0 1 3 5M

Type BP-1(p)

67 sq m / 721 sq ft
Inclusive of 11 sq m PES
& 3 sq m AC Ledge

- Block 2

#01-01
#01-05
#01-08 *
- Block 6

#01-35
#01-38 *
#01-42 *
- Block 2A

#01-09
#01-14 *
- Block 6A

#01-47
Block 6B
#01-55
- Block 2B

#01-15
#01-22 *
- Block 2D

#01-31

Type BP-1(h)

67 sq m / 721 sq ft
Inclusive of 11 sq m Balcony
& 3 sq m AC Ledge

- Block 2

#05-01
#05-05
#05-08 *
- Block 6

#05-35
#05-38 *
#05-42 *
- Block 2A

#05-09
#05-14 *
- Block 6A

#05-47
Block 6B
#05-55
- Block 2B

#05-15
#05-22 *
- Block 2D

#05-31

Type BP-1

62 sq m / 667 sq ft
Inclusive of 6 sq m Balcony
& 3 sq m AC Ledge

- Block 2

#02-01 to #04-01
#02-05 to #04-05
#02-08 to #04-08 *
- Block 2A

#02-09 to #04-09
#02-14 to #04-14 *
- Block 2B

#02-15 to #04-15
#02-22 to #04-22 *
- Block 2D

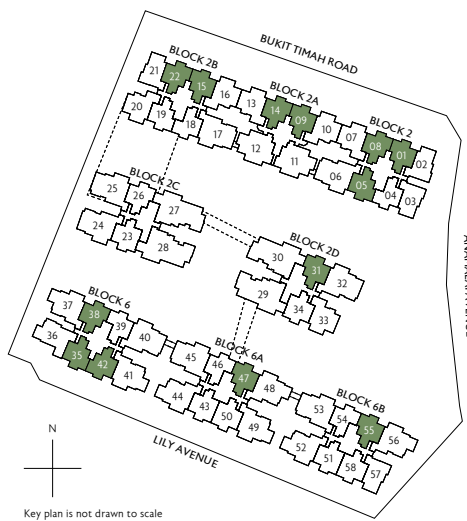
#02-31 to #04-31

- Block 6

#02-35 to #04-35
#02-38 to #04-38 *
#02-42 to #04-42 *
- Block 6A

#02-47 to #04-47
- Block 6B

#02-55 to #04-55

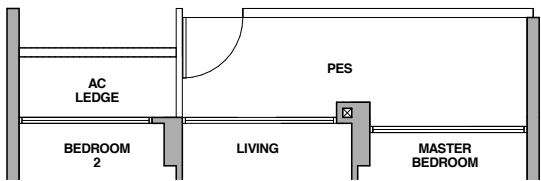


* Mirror Image

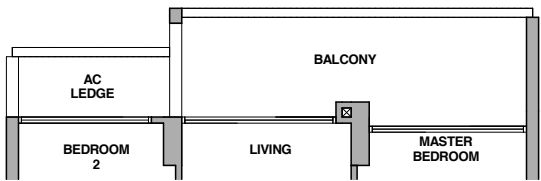
All plans are subject to change as may be required or approved by the relevant authorities. All floor areas are approximate measurements only and are subject to final survey. The balcony shall not be enclosed except with the approved balcony screen. For an illustration of the approved balcony screen, please refer to the diagram annexed hereto as "Annexure 1".

2-Bedroom Premium

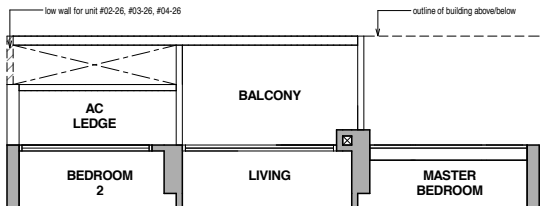
Type BP-1a(p)



Type BP-1a(h)



Type BP-1a



0 1 3 5M

Fridge
Shoe Cabinet
Washer cum Dryer

F
SC
WM

Storage
Distribution Board

ST
DB

Type BP-1a(p)

67 sq m / 721 sq ft
Inclusive of 11 sq m PES
& 3 sq m AC Ledge

- Block 2B

#01-19
- Block 2C

#01-26 *

Type BP-1a(h)

67 sq m / 721 sq ft
Inclusive of 11 sq m Balcony
& 3 sq m AC Ledge

- Block 2B

#05-19
- Block 2C

#05-26 *

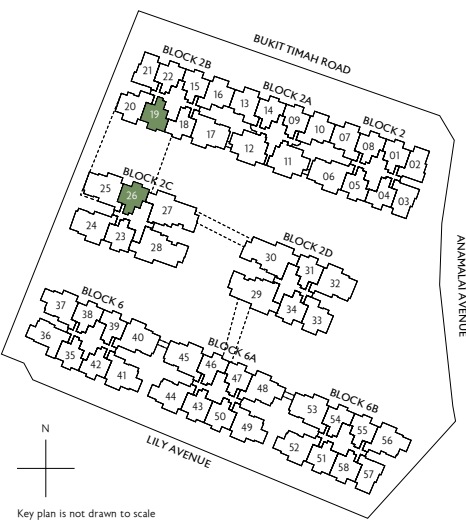
Type BP-1a

62 sq m / 667 sq ft
Inclusive of 6 sq m Balcony
& 3 sq m AC Ledge

- Block 2B

#02-19 to #04-19
- Block 2C

#02-26 to #04-26 *

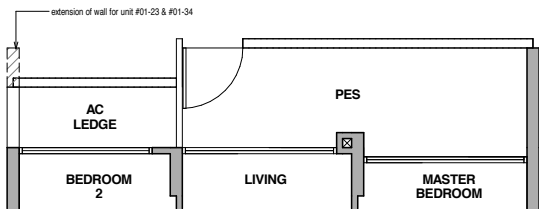


* Mirror Image

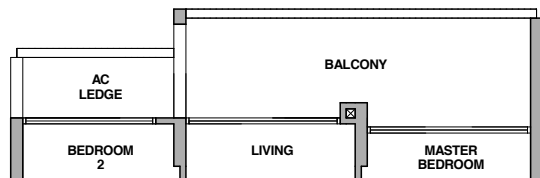
All plans are subject to change as may be required or approved by the relevant authorities. All floor areas are approximate measurements only and are subject to final survey. The balcony shall not be enclosed except with the approved balcony screen. For an illustration of the approved balcony screen, please refer to the diagram annexed hereto as "Annexure 1".

2-Bedroom + Study

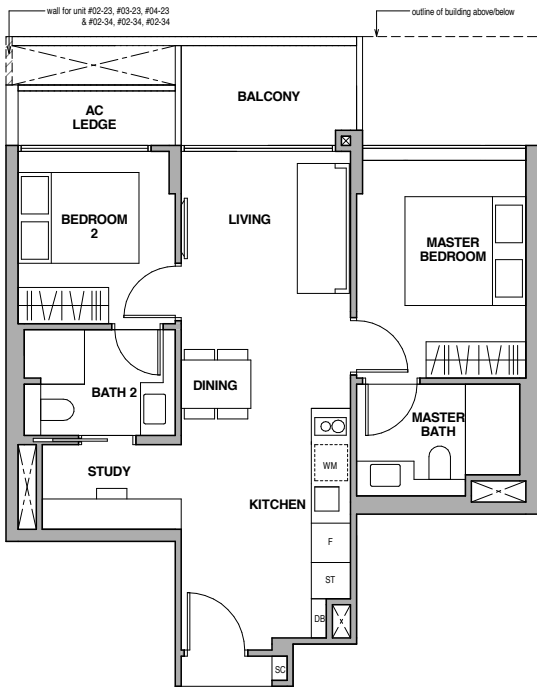
Type BS-1(p)



Type BS-1(h)



Type BS-1



Fridge
Shoe Cabinet
Washer cum Dryer

F
SC
WM

Storage
Distribution Board

ST
DB

0 1 3 5M

Type BS-1(p)

72 sq m / 775 sq ft
Inclusive of 11 sq m PES
& 3 sq m AC Ledge

Block 2C
#01-23

Block 2D
#01-34 *

Block 6A
#01-43
#01-50 *

Block 6B
#01-51
#01-58 *

Type BS-1(h)

72 sq m / 775 sq ft
Inclusive of 11 sq m Balcony
& 3 sq m AC Ledge

Block 2C
#05-23

Block 2D
#05-34 *

Block 6A
#05-43
#05-50 *

Block 6B
#05-51
#05-58 *

Type BS-1

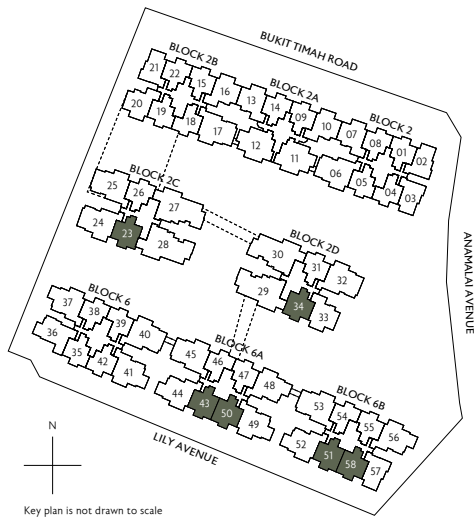
67 sq m / 721 sq ft
Inclusive of 6 sq m Balcony
& 3 sq m AC Ledge

Block 2C
#02-23 to #04-23

Block 2D
#02-34 to #04-34 *

Block 6A
#02-43 to #04-43
#02-50 to #04-50 *

Block 6B
#02-51 to #04-51
#02-58 to #04-58 *



* Mirror Image

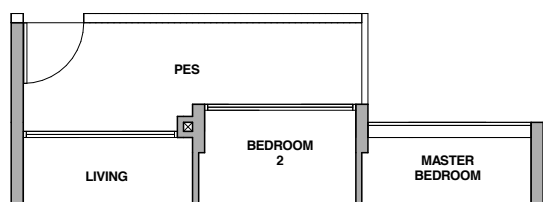
All plans are subject to change as may be required or approved by the relevant authorities. All floor areas are approximate measurements only and are subject to final survey. The balcony shall not be enclosed except with the approved balcony screen. For an illustration of the approved balcony screen, please refer to the diagram annexed hereto as "Annexure 1".



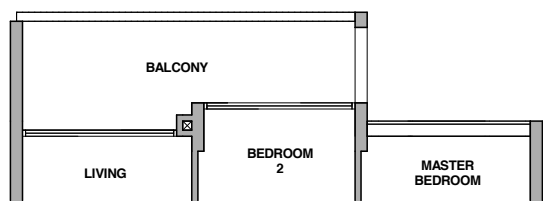
For illustration purposes only

2-Bedroom + Study

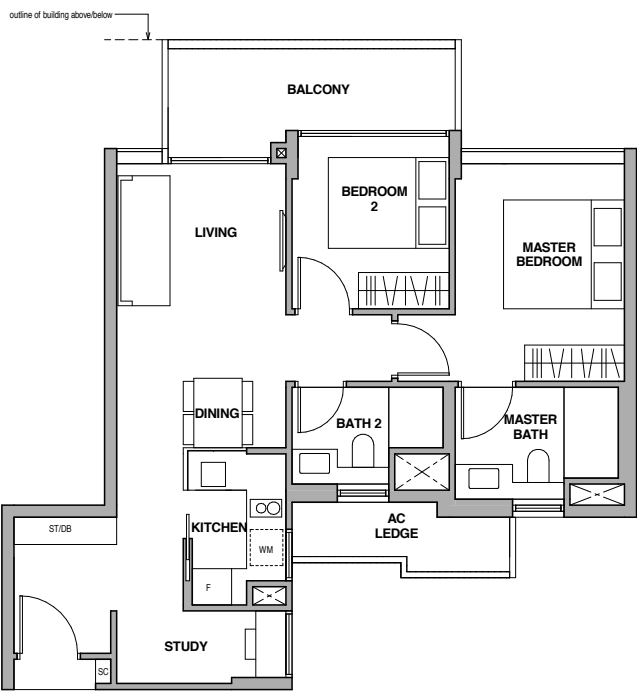
Type BS-2(p)



Type BS-2(h)



Type BS-2



Fridge
Shoe Cabinet
Washer cum Dryer

F
SC
WM

Storage
Distribution Board

ST
DB

0 1 3 5M

Type BS-2(p)

77 sq m / 829 sq ft
Inclusive of 10 sq m PES
& 4 sq m AC Ledge

Block 2
#01-07 *

Block 2A
#01-10
#01-13 *

Block 2B
#01-16

Block 2D
#01-33 *

Type BS-2(h)

77 sq m / 829 sq ft
Inclusive of 10 sq m Balcony
& 4 sq m AC Ledge

Block 2
#05-07 *

Block 2A
#05-10
#05-13 *

Block 2B
#05-16

Block 2D
#05-33 *

Type BS-2

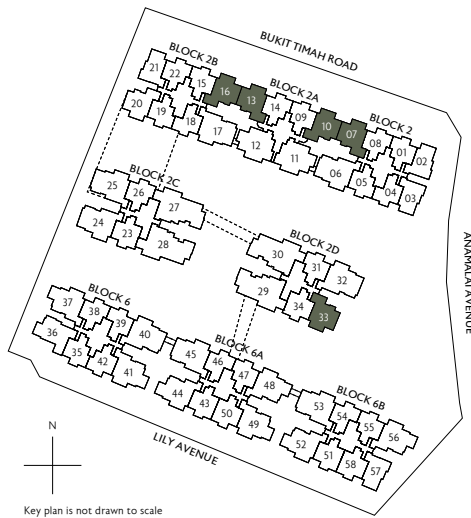
76 sq m / 818 sq ft
Inclusive of 9 sq m Balcony
& 4 sq m AC Ledge

Block 2
#02-07 to #04-07 *

Block 2A
#02-10 to #04-10
#02-13 to #04-13 *

Block 2B
#02-16 to #04-16

Block 2D
#02-33 to #04-33 *

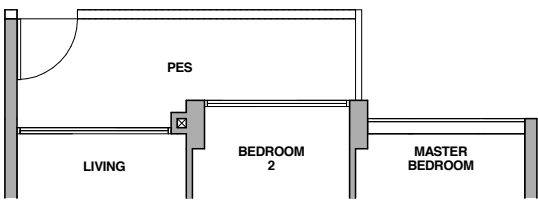


* Mirror Image

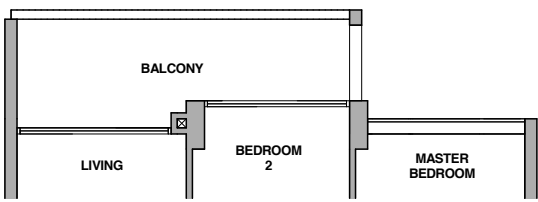
All plans are subject to change as may be required or approved by the relevant authorities. All floor areas are approximate measurements only and are subject to final survey. The balcony shall not be enclosed except with the approved balcony screen. For an illustration of the approved balcony screen, please refer to the diagram annexed hereto as "Annexure 1".

2-Bedroom + Study

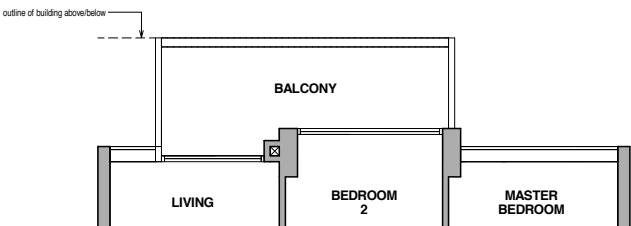
Type BS-2a(p)



Type BS-2a(h)



Type BS-2a



0 1 3 5M

Fridge
Shoe Cabinet
Washer cum Dryer

F
SC
WM

Storage
Distribution Board

ST
DB

Type BS-2a(p)

77 sq m / 829 sq ft
Inclusive of 10 sq m PES
& 4 sq m AC Ledge

Block 2B
#01-20

Type BS-2a(h)

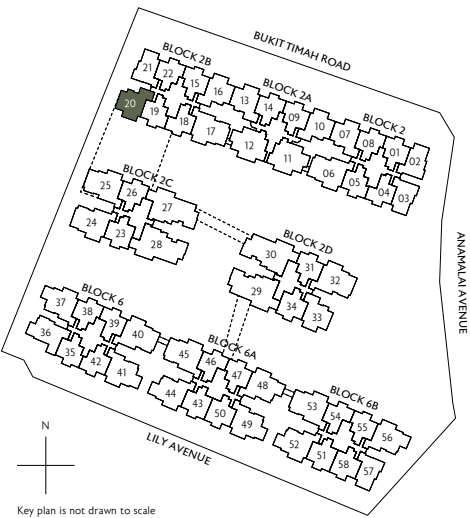
77 sq m / 829 sq ft
Inclusive of 10 sq m Balcony
& 4 sq m AC Ledge

Block 2B
#05-20

Type BS-2a

76 sq m / 818 sq ft
Inclusive of 9 sq m Balcony
& 4 sq m AC Ledge

Block 2B
#02-20 to #04-20

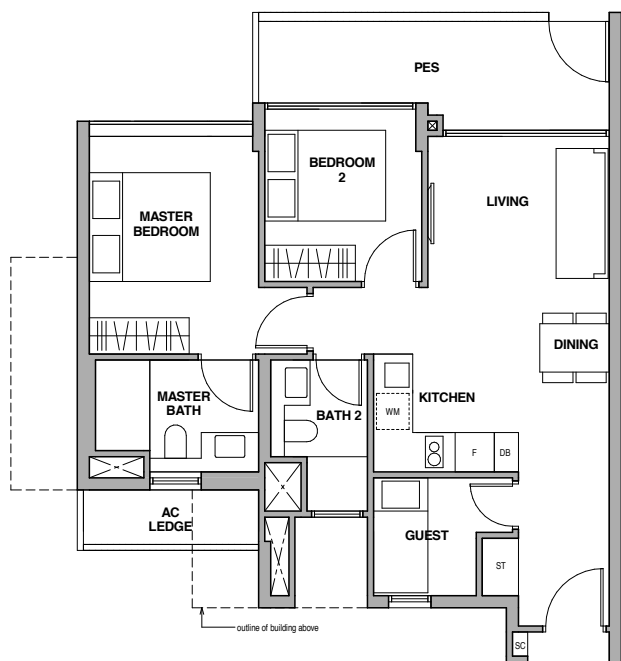


All plans are subject to change as may be required or approved by the relevant authorities. All floor areas are approximate measurements only and are subject to final survey. The balcony shall not be enclosed except with the approved balcony screen. For an illustration of the approved balcony screen, please refer to the diagram annexed hereto as "Annexure 1".

2-Bedroom + Guest

2-Bedroom + Guest

Type BG-1(p)



Fridge
Shoe Cabinet
Washer cum Dryer

F
SC
WM

Storage
Distribution Board

ST
DB

0

1

3

5M

Type BG-1(p)

76 sq m / 818 sq ft
Inclusive of 11 sq m PES
& 3 sq m AC Ledge

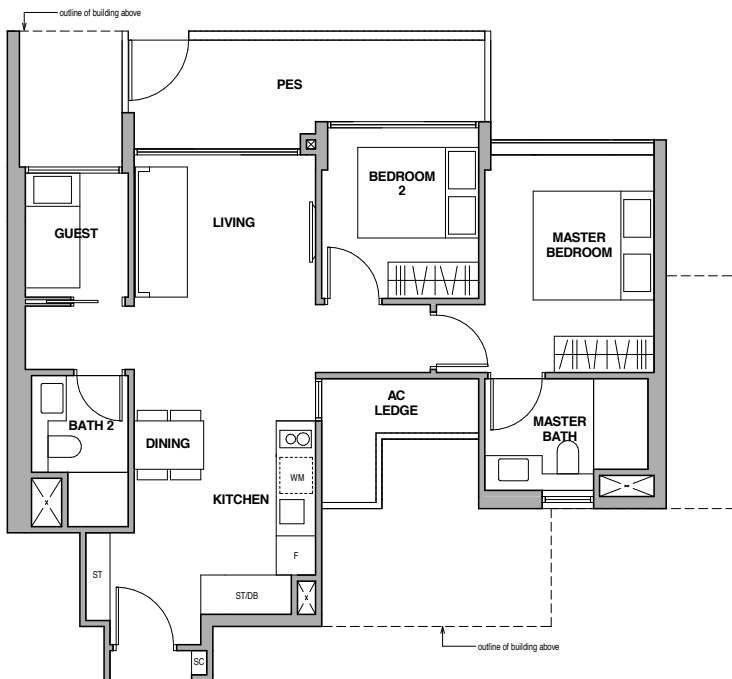
Block 2A
#01-11



* Mirror Image

All plans are subject to change as may be required or approved by the relevant authorities. All floor areas are approximate measurements only and are subject to final survey. The balcony shall not be enclosed except with the approved balcony screen. For an illustration of the approved balcony screen, please refer to the diagram annexed hereto as "Annexure 1".

Type BG-2(p)



Fridge
Shoe Cabinet
Washer cum Dryer

F
SC
WM

Storage
Distribution Board

ST
DB

0

1

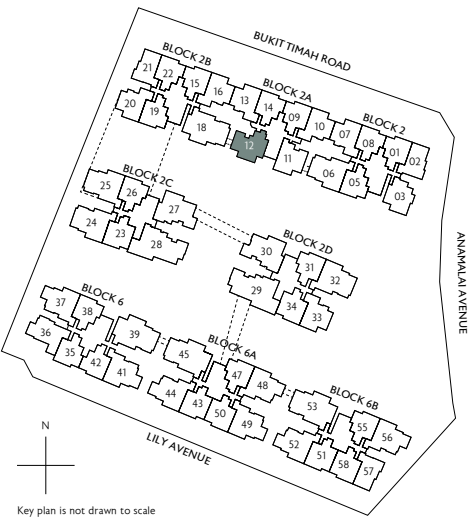
3

5M

Type BG-2(p)

80 sq m / 861 sq ft
Inclusive of 11 sq m PES
& 4 sq m AC Ledge

Block 2A
#01-12

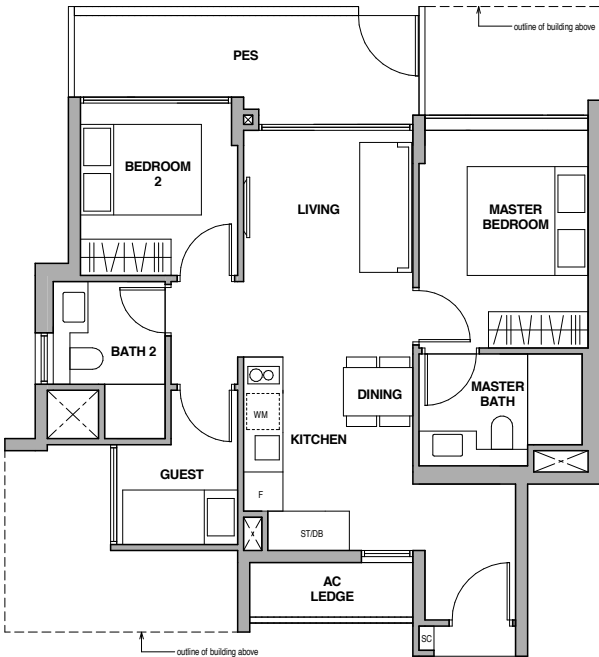


All plans are subject to change as may be required or approved by the relevant authorities. All floor areas are approximate measurements only and are subject to final survey. The balcony shall not be enclosed except with the approved balcony screen. For an illustration of the approved balcony screen, please refer to the diagram annexed hereto as "Annexure 1".

2-Bedroom + Guest

3-Bedroom

Type BG-3(p)



Fridge
Shoe Cabinet
Washer cum Dryer

F
SC
WM

Storage
Distribution Board

ST
DB

0 1 3 5M

Type BG-3(p)

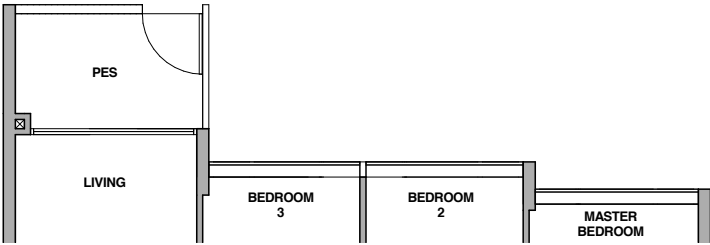
75 sq m / 807 sq ft
Inclusive of 10 sq m PES
& 3 sq m AC Ledge

Block 2
#01-03

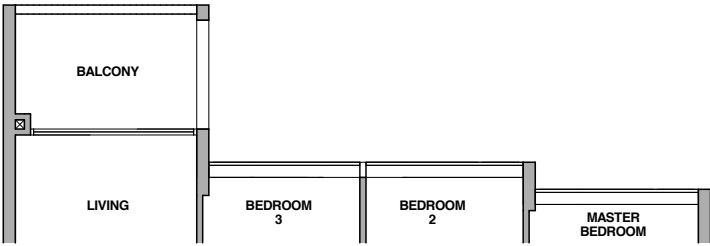


All plans are subject to change as may be required or approved by the relevant authorities. All floor areas are approximate measurements only and are subject to final survey. The balcony shall not be enclosed except with the approved balcony screen. For an illustration of the approved balcony screen, please refer to the diagram annexed hereto as "Annexure 1".

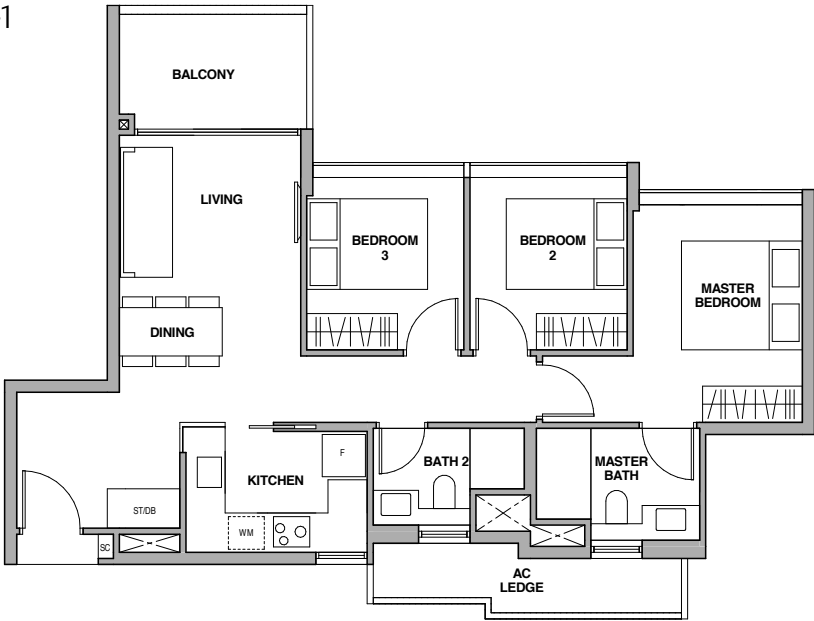
Type C-1(p)



Type C-1(h)



Type C-1



0 1 3 5M

Fridge
Shoe Cabinet
Washer cum Dryer

F
SC
WM

Storage
Distribution Board

ST
DB

Type C-1(p)

86 sq m / 926 sq ft
Inclusive of 6 sq m PES
& 6 sq m AC Ledge

Block 6
#01-36

Type C-1(h)

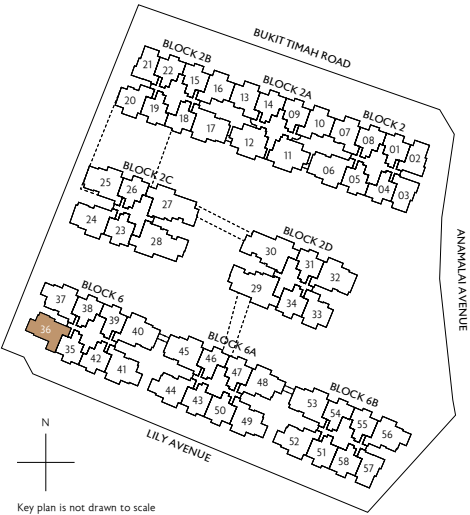
86 sq m / 926 sq ft
Inclusive of 6 sq m Balcony
& 6 sq m AC Ledge

Block 6
#05-36

Type C-1

86 sq m / 926 sq ft
Inclusive of 6 sq m Balcony
& 6 sq m AC Ledge

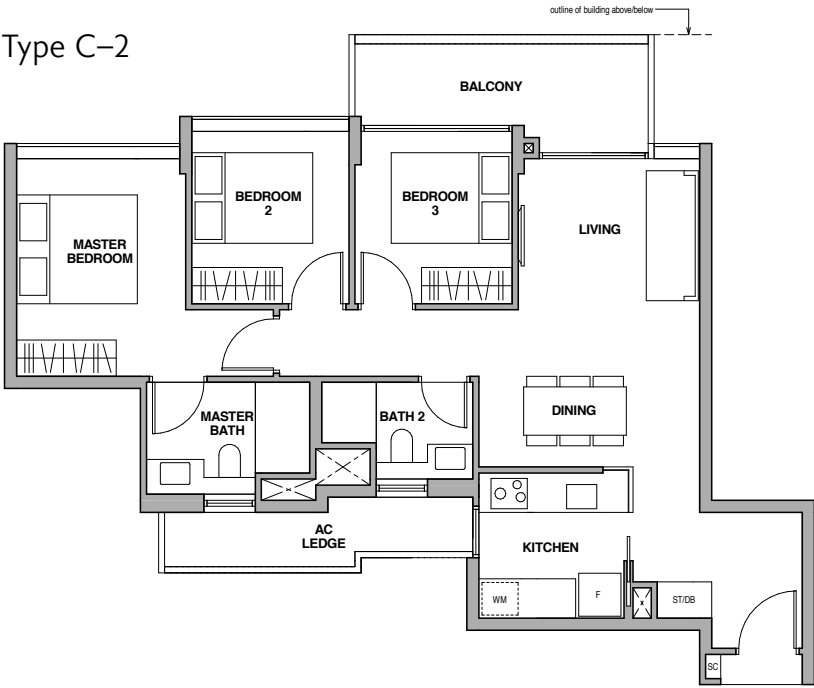
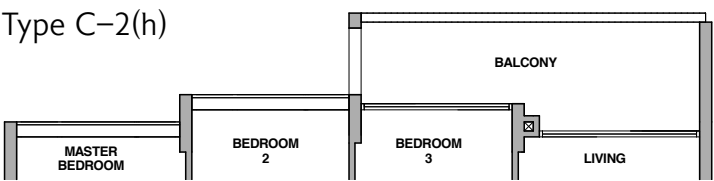
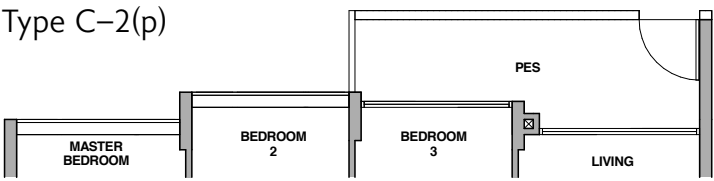
Block 6
#02-36 to #04-36



All plans are subject to change as may be required or approved by the relevant authorities. All floor areas are approximate measurements only and are subject to final survey. The balcony shall not be enclosed except with the approved balcony screen. For an illustration of the approved balcony screen, please refer to the diagram annexed hereto as "Annexure 1".

3-Bedroom

3-Bedroom



Fridge
Shoe Cabinet
Washer cum Dryer

F
SC
WM

Storage
Distribution Board

ST
DB

0 1 3 5M

- Type C-2(p)

92 sq m / 990 sq ft
Inclusive of 10 sq m PES
& 6 sq m AC Ledge

Block 6
#01-37
#01-41

Block 6A
#01-44 *
#01-48 *
#01-49

Block 6B
#01-52 *
#01-56 *
- Type C-2(h)

92 sq m / 990 sq ft
Inclusive of 10 sq m Balcony
& 6 sq m AC Ledge

Block 6
#05-37
#05-41

Block 6A
#05-44 *
#05-48 *
#05-49

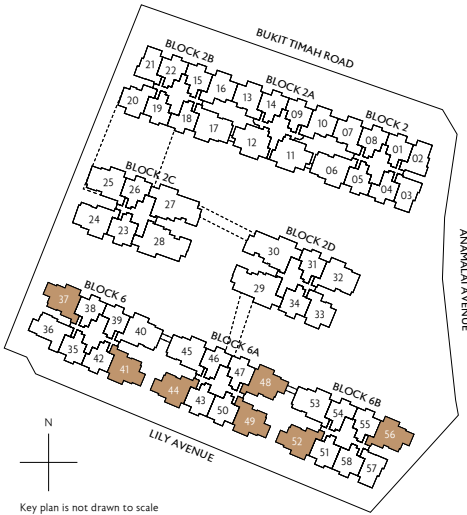
Block 6B
#05-52 *
#05-56 *
- Type C-2

91 sq m / 980 sq ft
Inclusive of 9 sq m Balcony
& 6 sq m AC Ledge

Block 6
#02-37 to #04-37
#02-41 to #04-41

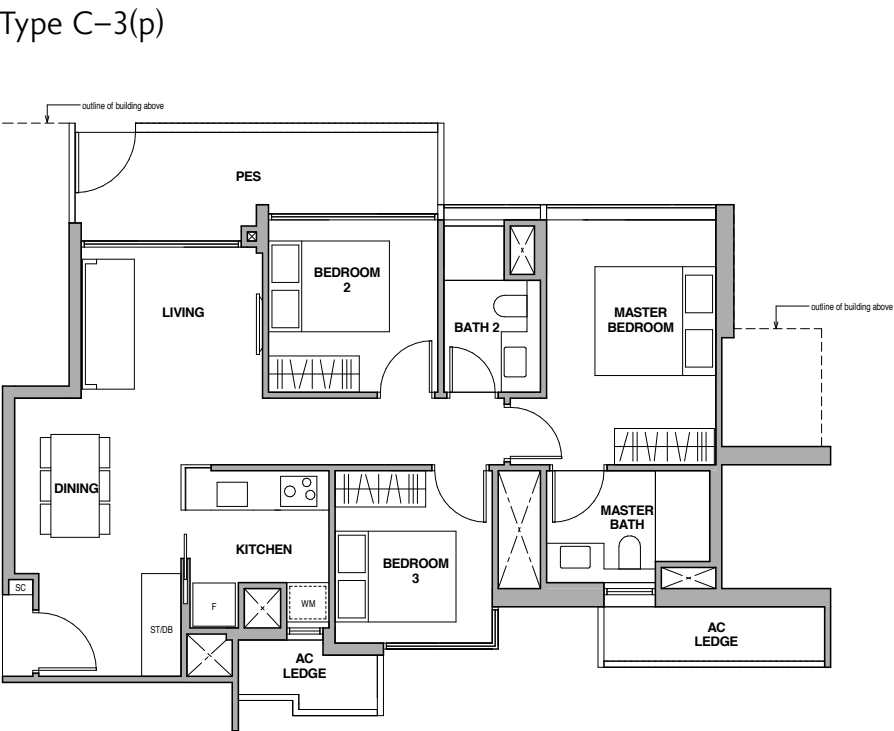
Block 6A
#02-44 to #04-44 *
#02-48 to #04-48 *
#02-49 to #04-49

Block 6B
#02-52 to #04-52 *
#02-56 to #04-56 *



* Mirror Image

All plans are subject to change as may be required or approved by the relevant authorities. All floor areas are approximate measurements only and are subject to final survey. The balcony shall not be enclosed except with the approved balcony screen. For an illustration of the approved balcony screen, please refer to the diagram annexed hereto as "Annexure 1".



0 1 3 5M

Fridge
Shoe Cabinet
Washer cum Dryer

F
SC
WM

Storage
Distribution Board

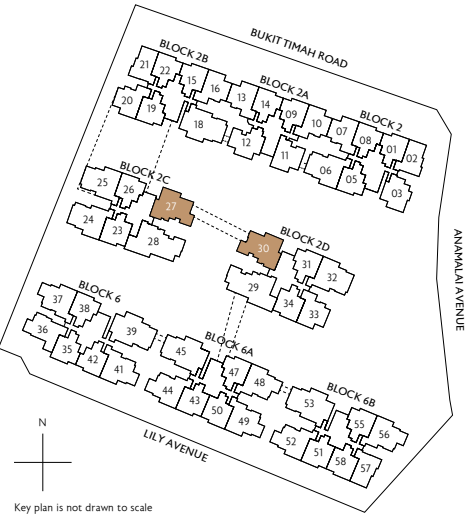
ST
DB

- Type C-3(p)

92 sq m / 990 sq ft
Inclusive of 10 sq m PES
& 7 sq m AC Ledge

Block 2C
#01-27

Block 2D
#01-30 *

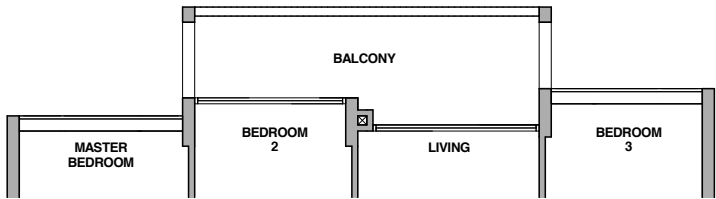


* Mirror Image

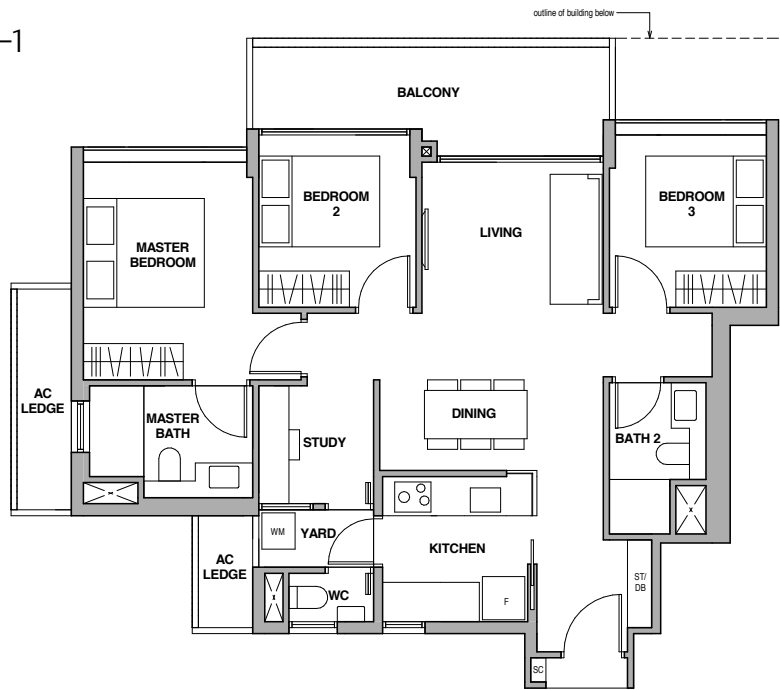
All plans are subject to change as may be required or approved by the relevant authorities. All floor areas are approximate measurements only and are subject to final survey. The balcony shall not be enclosed except with the approved balcony screen. For an illustration of the approved balcony screen, please refer to the diagram annexed hereto as "Annexure 1".

3-Bedroom + Study

Type CS-1(h)



Type CS-1



Fridge
Shoe Cabinet
Washer cum Dryer

F
SC
WM

Storage
Distribution Board

ST
DB

0 1 3 5M

Type CS-1(h)

97 sq m / 1044 sq ft
Inclusive of 10 sq m Balcony
& 6 sq m AC Ledge

Block 2A
#05-11
#05-12 *

Type CS-1

97 sq m / 1044 sq ft
Inclusive of 10 sq m Balcony
& 6 sq m AC Ledge

Block 2A
#02-11 to #04-11
#02-12 to #04-12 *

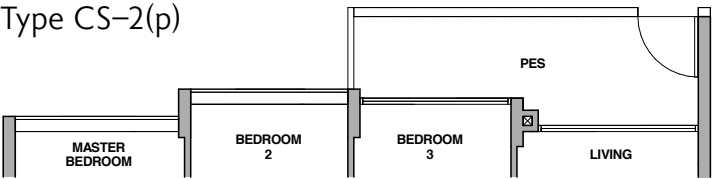


* Mirror Image

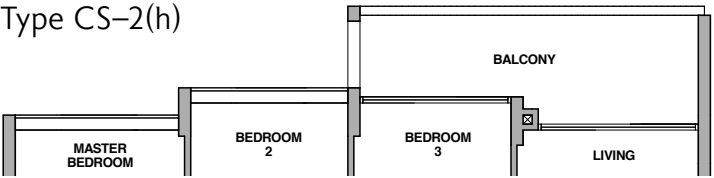
All plans are subject to change as may be required or approved by the relevant authorities. All floor areas are approximate measurements only and are subject to final survey. The balcony shall not be enclosed except with the approved balcony screen. For an illustration of the approved balcony screen, please refer to the diagram annexed hereto as "Annexure 1".

3-Bedroom + Study

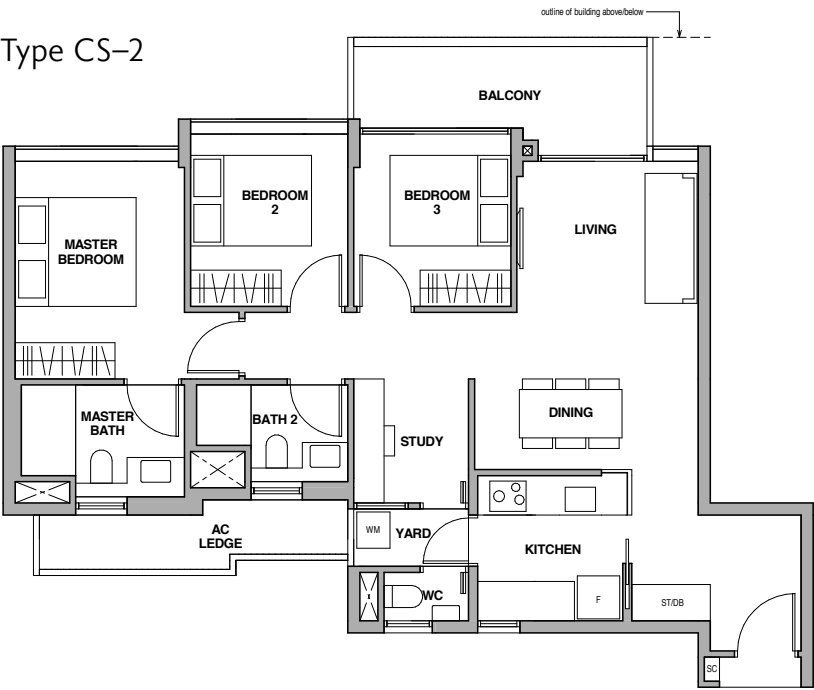
Type CS-2(p)



Type CS-2(h)



Type CS-2



0 1 3 5M

Fridge
Shoe Cabinet
Washer cum Dryer

F
SC
WM

Storage
Distribution Board

ST
DB

Type CS-2(p)

100 sq m / 1076 sq ft
Inclusive of 10 sq m PES
& 6 sq m AC Ledge

Block 2
#01-06 *

Block 2C
#01-24 *

Block 2D
#01-32 *

Type CS-2(h)

100 sq m / 1076 sq ft
Inclusive of 10 sq m Balcony
& 6 sq m AC Ledge

Block 2
#05-06 *

Block 2B
#05-17

Block 2C
#05-24 *

Block 2D
#05-32 *

Type CS-2

99 sq m / 1066 sq ft
Inclusive of 9 sq m Balcony
& 6 sq m AC Ledge

Block 2
#02-06 to #04-06 *

Block 2B
#02-17 to #04-17

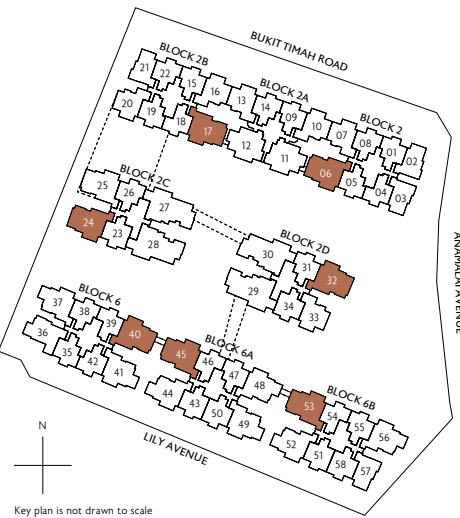
Block 2C
#02-24 to #04-24 *

Block 2D
#02-32 to #04-32 *

Block 6
#02-40 to #04-40 *

Block 6A
#02-45 to #04-45

Block 6B
#02-53 to #04-53



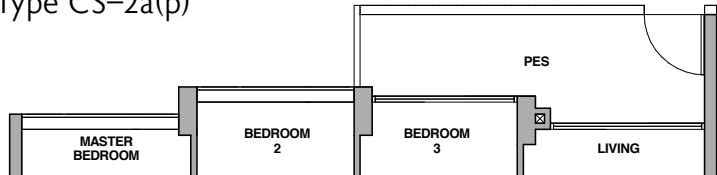
Key plan is not drawn to scale

* Mirror Image

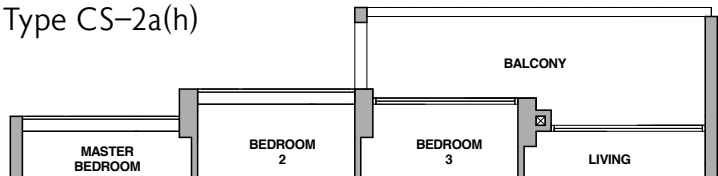
All plans are subject to change as may be required or approved by the relevant authorities. All floor areas are approximate measurements only and are subject to final survey. The balcony shall not be enclosed except with the approved balcony screen. For an illustration of the approved balcony screen, please refer to the diagram annexed hereto as "Annexure 1".

3-Bedroom + Study

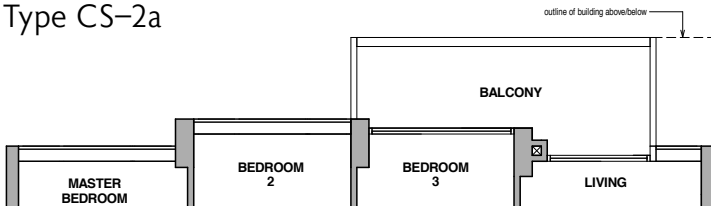
Type CS-2a(p)



Type CS-2a(h)



Type CS-2a



Fridge
Shoe Cabinet
Washer cum Dryer

F
SC
WM

Storage
Distribution Board

ST
DB

0 1 3 5M

Type CS-2a(p)

100 sq m / 1076 sq ft
Inclusive of 10 sq m PES
& 6 sq m AC Ledge

Block 2C
#01-25

Type CS-2a(h)

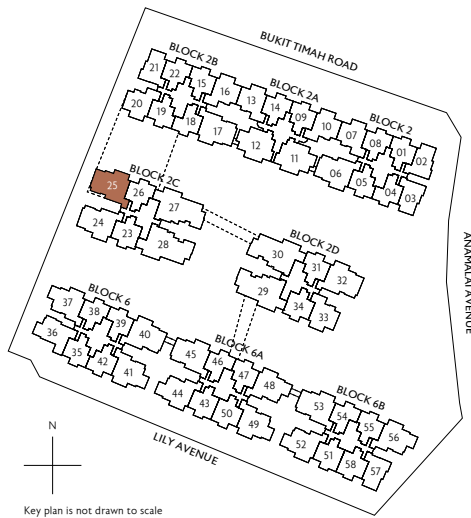
100 sq m / 1076 sq ft
Inclusive of 10 sq m Balcony
& 6 sq m AC Ledge

Block 2C
#05-25

Type CS-2a

99 sq m / 1066 sq ft
Inclusive of 9 sq m Balcony
& 6 sq m AC Ledge

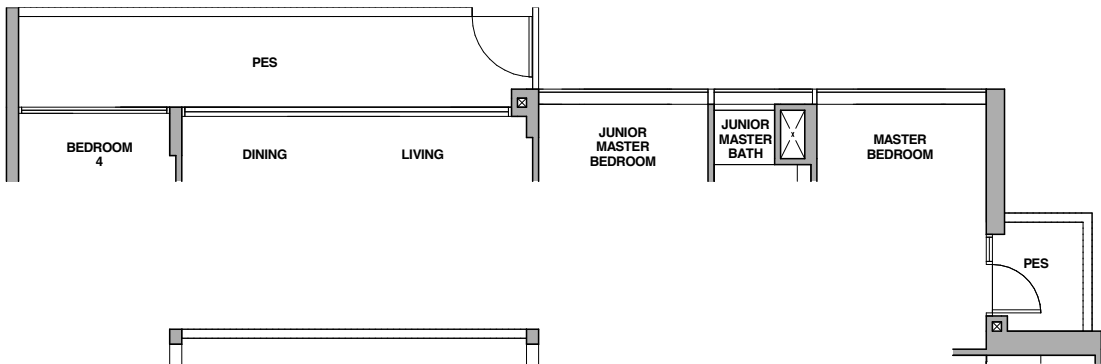
Block 2C
#02-25 to #04-25



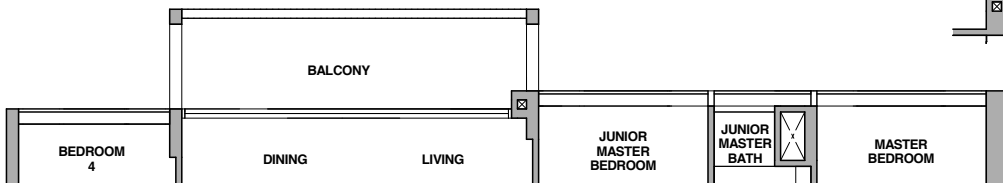
Key plan is not drawn to scale

4-Bedroom Premium

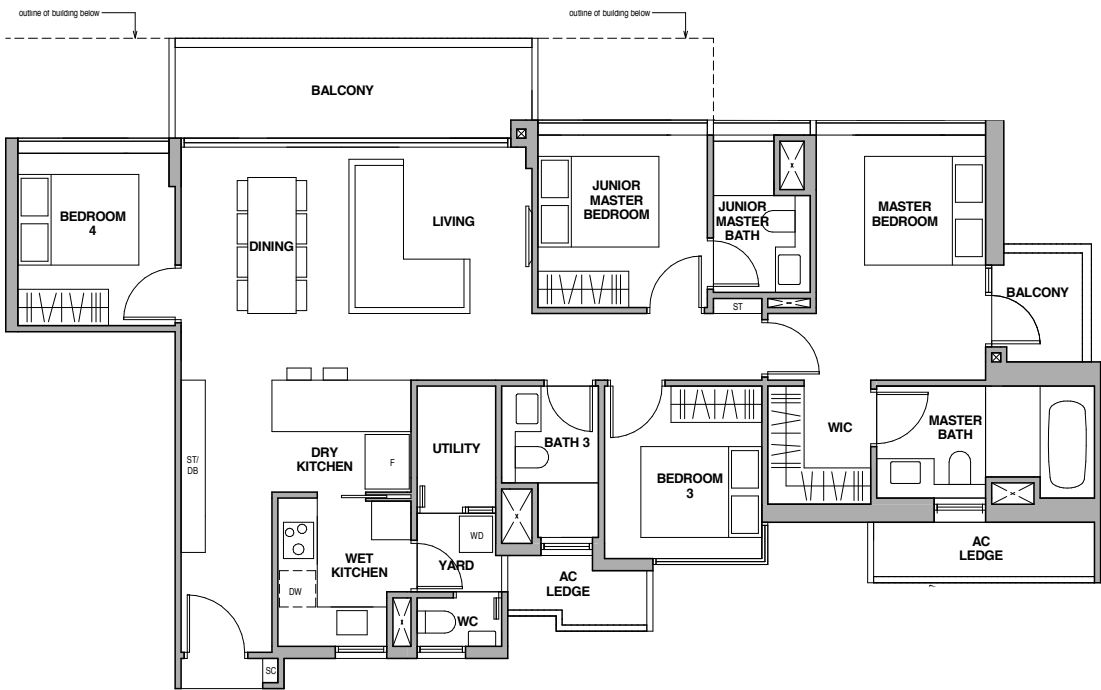
Type DP-1(p)



Type DP-1(h)



Type DP-1



0 1 3 5M

Fridge
Shoe Cabinet
Washer and Dryer
Walk-in Closet

F
SC
WD
WIC

Storage
Distribution Board
Dishwasher

ST
DB
DW

Type DP-1(p)

137 sq m / 1475 sq ft
Inclusive of 17 sq m PES
& 7 sq m AC Ledge

Block 2C
#01-28 *

Type DP-1(h)

133 sq m / 1432 sq ft
Inclusive of 13 sq m Balcony
& 7 sq m AC Ledge

Block 2C
#05-27
#05-28 *

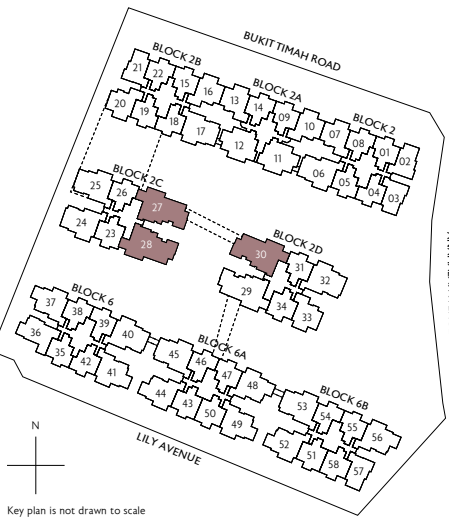
Block 2D
#05-30 *

Type DP-1

133 sq m / 1432 sq ft
Inclusive of 13 sq m Balcony
& 7 sq m AC Ledge

Block 2C
#02-27 to #04-27
#02-28 to #04-28 *

Block 2D
#02-30 to #04-30 *



Key plan is not drawn to scale

* Mirror Image

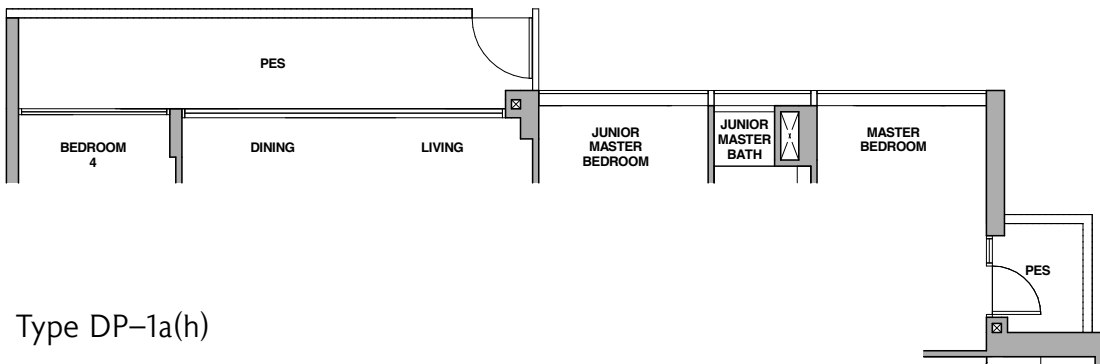
All plans are subject to change as may be required or approved by the relevant authorities. All floor areas are approximate measurements only and are subject to final survey. The balcony shall not be enclosed except with the approved balcony screen. For an illustration of the approved balcony screen, please refer to the diagram annexed hereto as "Annexure 1".

All plans are subject to change as may be required or approved by the relevant authorities. All floor areas are approximate measurements only and are subject to final survey. The balcony shall not be enclosed except with the approved balcony screen. For an illustration of the approved balcony screen, please refer to the diagram annexed hereto as "Annexure 1".

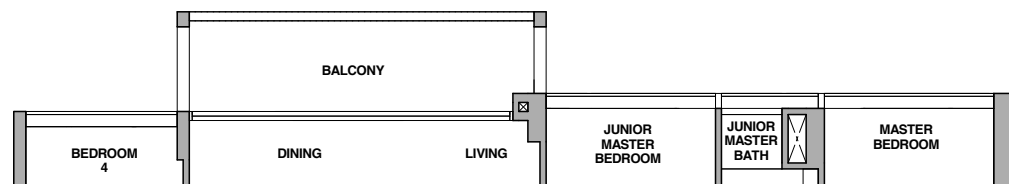
4-Bedroom Premium

4-Bedroom + Study

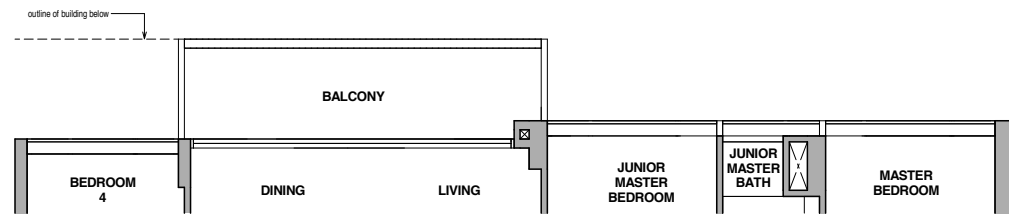
Type DP-1a(p)



Type DP-1a(h)



Type DP-1a



Fridge
Shoe Cabinet
Washer and Dryer
Walk-in Closet

F
SC
WD
WIC

Storage
Distribution Board
Dishwasher

ST
DB
DW

0 1 3 5M

Type DP-1a(p)
137 sq m / 1475 sq ft
Inclusive of 17 sq m PES
& 7 sq m AC Ledge

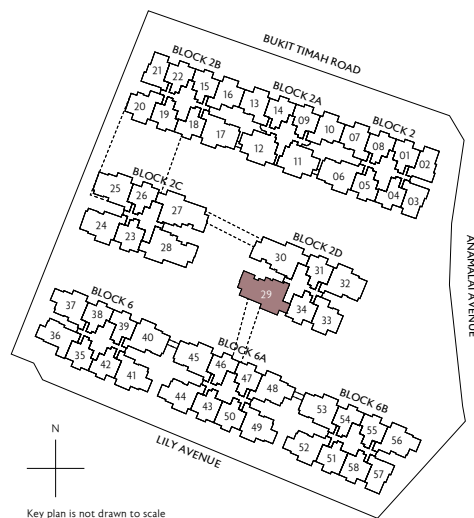
Block 2D
#01-29

Type DP-1a(h)
133 sq m / 1432 sq ft
Inclusive of 13 sq m Balcony
& 7 sq m AC Ledge

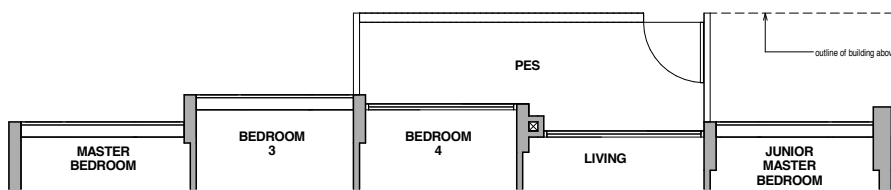
Block 2D
#05-29

Type DP-1a
133 sq m / 1432 sq ft
Inclusive of 13 sq m Balcony
& 7 sq m AC Ledge

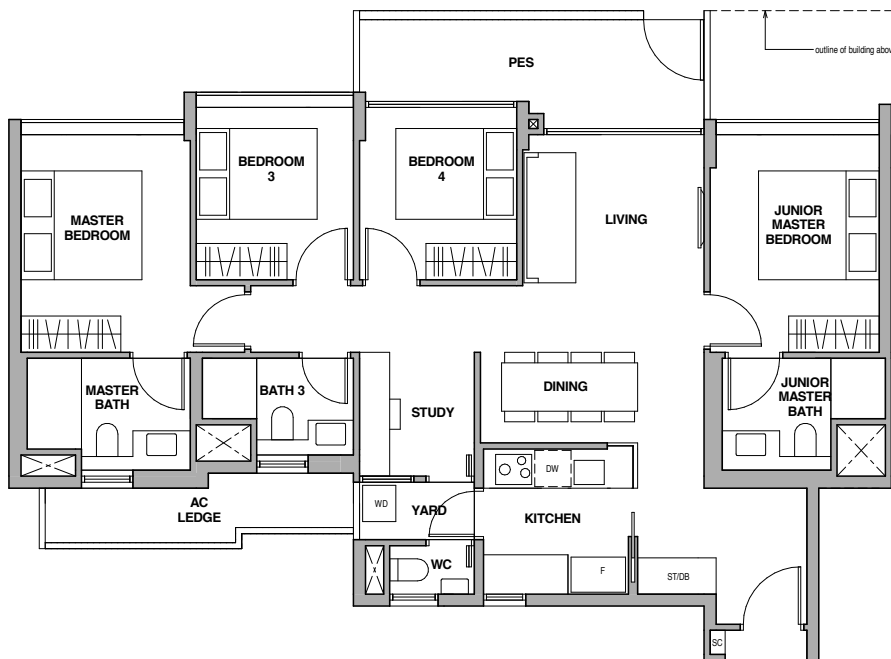
Block 2D
#02-29 to #04-29



Type DS-1a(p)



Type DS-1(p)



0 1 3 5M

Fridge
Shoe Cabinet
Washer and Dryer

F
SC
WD

Storage
Distribution Board
Dishwasher

ST
DB
DW

Type DS-1a(p)
117 sq m / 1259 sq ft
Inclusive of 10 sq m PES
& 6 sq m AC Ledge

Block 2B
#01-18

Block 6A
#01-45

Type DS-1(p)
117 sq m / 1259 sq ft
Inclusive of 10 sq m PES
& 6 sq m AC Ledge

Block 6
#01-39 *

Block 6B
#01-53



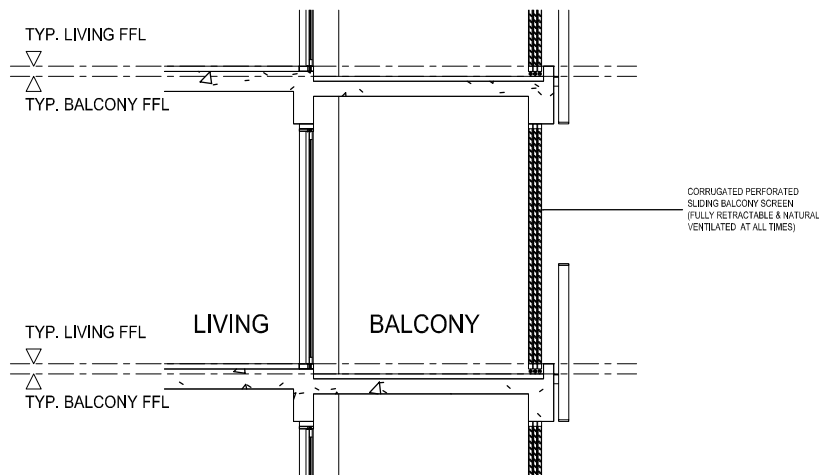
All plans are subject to change as may be required or approved by the relevant authorities. All floor areas are approximate measurements only and are subject to final survey. The balcony shall not be enclosed except with the approved balcony screen. For an illustration of the approved balcony screen, please refer to the diagram annexed hereto as "Annexure 1".

All plans are subject to change as may be required or approved by the relevant authorities. All floor areas are approximate measurements only and are subject to final survey. The balcony shall not be enclosed except with the approved balcony screen. For an illustration of the approved balcony screen, please refer to the diagram annexed hereto as "Annexure 1".

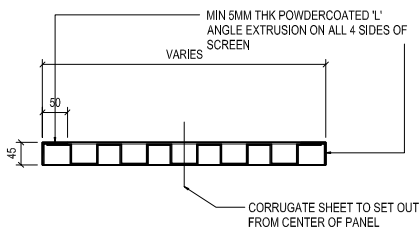
* Mirror Image

Annexure 1

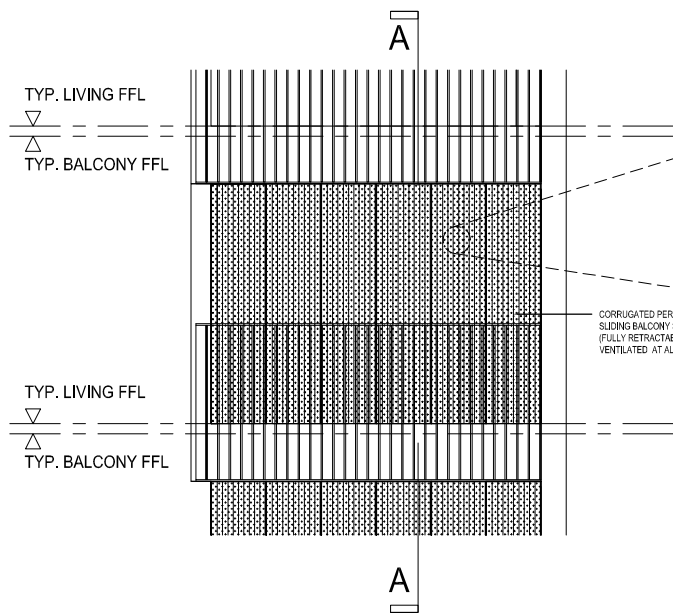
Approved Balcony Screen



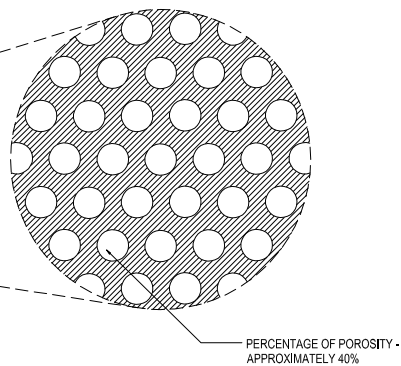
Typical Retractable Balcony Screen



Sliding Panel Detail



Typical Retractable Balcony Screen
Elevation (Closed Position)



Perforated Finish

Premium
Palette

Note:
1. The balcony shall not be enclosed unless with the approved balcony screen (as shown above)
2. The installation and cost of the screen shall be borne by the Purchaser